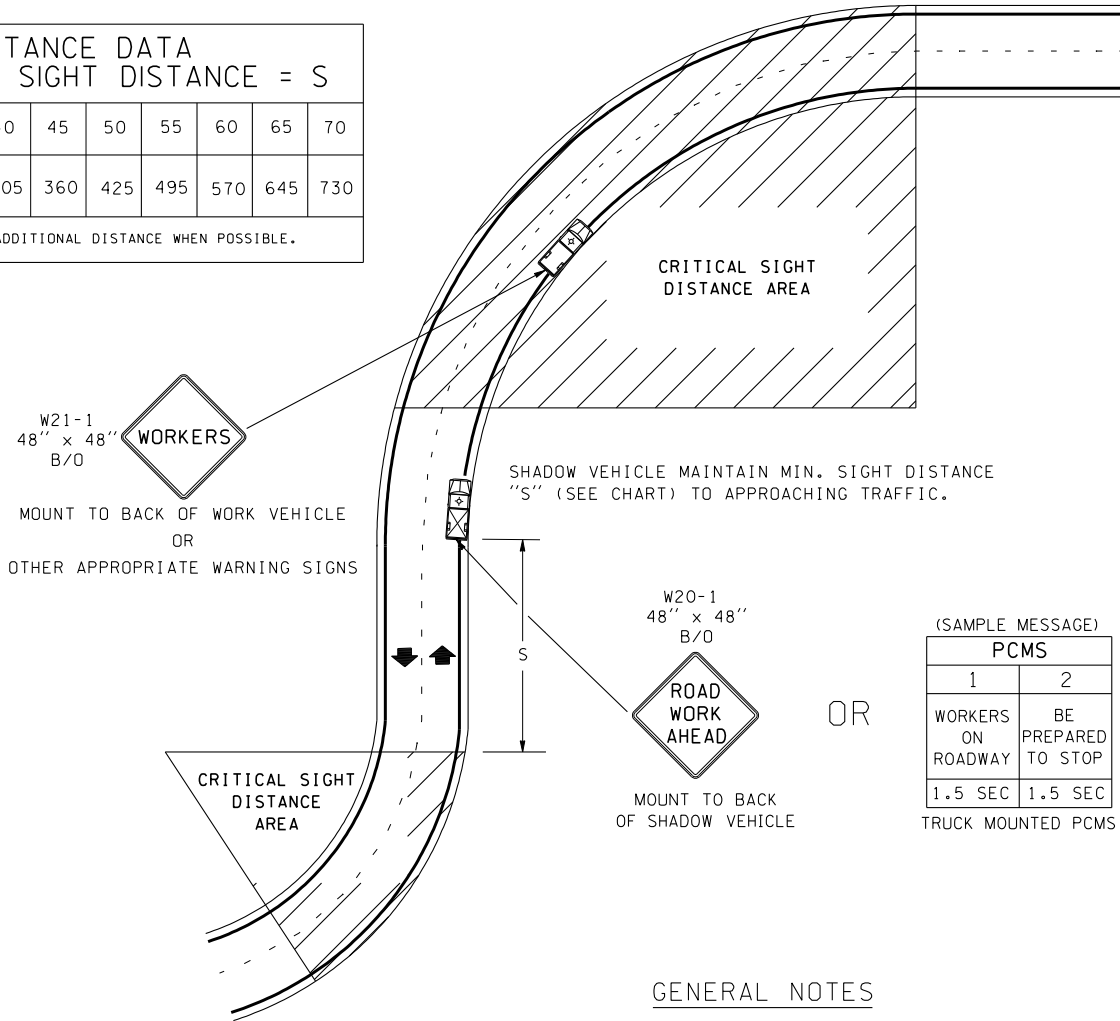


SIGHT DISTANCE DATA										
MINIMUM STOPPING SIGHT DISTANCE = S										
SPEED LIMIT MPH	25	30	35	40	45	50	55	60	65	70
DISTANCE FEET	155	200	250	305	360	425	495	570	645	730
DISTANCES SHOWN ARE MINIMUMS. USE ADDITIONAL DISTANCE WHEN POSSIBLE.										



LEGEND



WORK VEHICLE WITH FLASHING AMBER WARNING BEACON



SHADOW VEHICLE WITH FLASHING AMBER WARNING BEACON (TMA RECOMMENDED, BUT NOT REQUIRED)

GENERAL NOTES

1. DAYLIGHT HOURS ONLY.
2. RADIO CONTACT BETWEEN WORK CREW AND SHADOW VEHICLE REQUIRED.
3. PCMS RECOMMENDED.

TYPICAL MOBILE SHOULDER OPERATION WITH LANE ENCROACHMENT
TCD 14