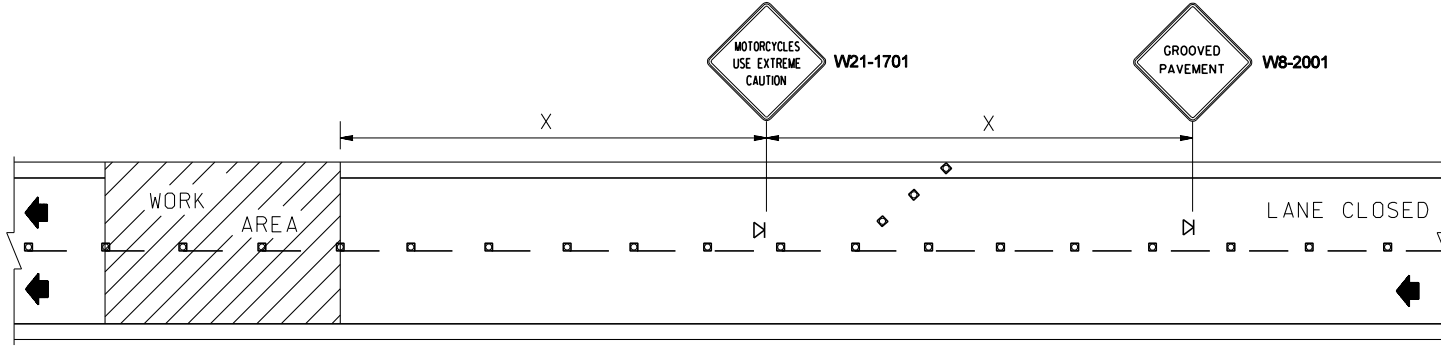


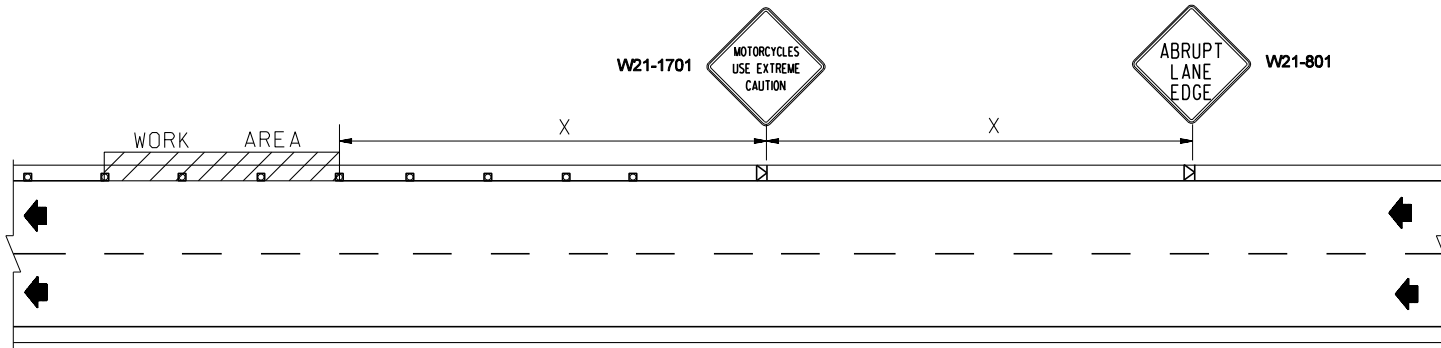
SIGN SPACING = X (feet) (1)		
Freeways & Expressways	55/70 MPH	1500'+- (OR AS PER MUTCD)
Rural Highways	60/65 MPH	800'+-
Rural Roads	45/55 MPH	500'+-
Rural Roads & Urban Arterials	35/40 MPH	350'+-
Rural Roads, Urban Arterials Residential & Business Districts	25/30 MPH	200'+- (2)
Urban Streets	25 MPH or LESS	100'+- (2)
ALL SIGNS ARE 48" x 48" BLACK ON ORANGE UNLESS OTHERWISE DESIGNATED.		

(1) All spacing may be adjusted to accommodate interchange ramps, at-grade intersections, and driveways.
(2) This spacing may be reduced in urban areas to fit roadway conditions.

CHANNELIZING DEVICE SPACING (FEET)		
MPH	TAPER	TANGENT
50/70	40	80
35/45	30	60
25/30	20	40



TYPICAL SIGNING FOR LANE CLOSURE



TYPICAL SIGNING FOR SHOULDER WORK

NOTES

- REFER TO TCP'S FOR TYPICAL LANE CLOSURE AND SHOULDER CLOSURE SIGNING DETAILS, DEVICE SPACING REQUIREMENTS AND TAPER LENGTHS.

LEGEND

- ▣ SIGN LOCATION
- □ □ CHANNELIZING DEVICES

TYPICAL MOTORCYCLE SIGNING DETAIL
TCD 2