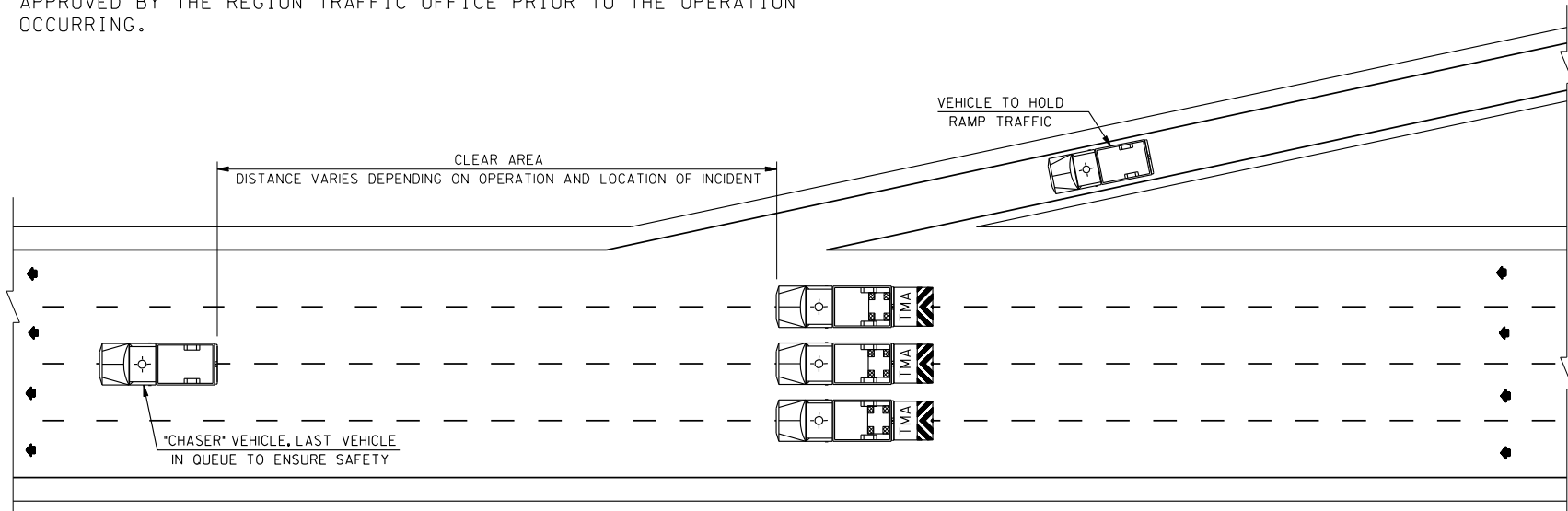





THIS PLAN DEPICTS THE MINIMUM REQUIREMENTS TO PERFORM AN EMERGENCY ROLLING SLOWDOWN. IF THE SLOWDOWN IS, OR CAN BE, A PLANNED EVENT, THEN A SITE SPECIFIC TRAFFIC CONTROL PLAN SHOULD BE DEVELOPED AND APPROVED BY THE REGION TRAFFIC OFFICE PRIOR TO THE OPERATION OCCURRING.



(SAMPLE MESSAGE)

TRUCK MOUNTED PCMS	
1	2
SLOW OR STOPPED VEHICLES	DO NOT PASS
1.5 SEC	1.5 SEC

LEGEND

-  TRUCK MOUNTED ATTENUATOR (RECOMMENDED)
-  WARNING BEACON - REQUIRED
-  ARROW PANEL - CAUTION MODE (REQUIRED)

OPERATIONAL NOTES

1. ALL WORK VEHICLES SHALL USE WARNING BEACONS.
2. THE NUMBER OF VEHICLES SHOWN IS A MINIMUM. IF POSSIBLE USE ONE VEHICLE PER LANE DURING CLOSURE.
3. WSP SHALL BE NOTIFIED AND ON SITE WHEN AVAILABLE.
4. ALL ON-RAMP TRAFFIC SHALL BE STOPPED DURING SLOWDOWN.

TYPICAL ROLLING SLOWDOWN
 TCD 7